



Studying the Relationship between Migration and the Economic Status and Livelihood Stability of Households in Rural Areas: Case Study of Olad Qobad Rural District

Maryam Teymouri Niko

Master of Social Sciences, Regional Development Planning Major
From Allameh Tabatabaei Faculty of Social Sciences.

Abstract

This study examines the relationship between migration and the economic status and livelihood stability of households in rural areas, focusing on Olad Qobad Rural District. Given population growth and changes in social structure, migration is recognized as an important and complex phenomenon in the field of economy and population. Olad Qobad Rural District, like many rural areas of Iran, faces migration challenges that can have significant impacts on the economic status and livelihood stability of households. This study is based on an applied objective and uses quantitative and descriptive research methods, and the information collected from people's opinions through a researcher-made questionnaire was analyzed. The statistical population consisted of 1716 people, of whom 210 were selected as a sample through stratified random sampling based on the Cochran formula. The results of the study showed that economic status had the highest mean and standard deviation, indicating the importance of this variable for the respondents. Also, a direct relationship was observed between migration and increased income and livelihood stability in the place of origin. Pearson correlation test showed that there is a positive and significant correlation ($r=0.92$) between migration and economic status. Also, regression analysis showed that about 86 percent of the migration variance is explained by economic status. These findings emphasize the determining role of economic status in the migration process. According to the findings of this study, based on the results, economic status and migration are significantly related to each other and these variables can be used to formulate sustainable development policies in rural areas.

Keywords: livelihood, economy, migration, Olad Qobad

Introduction

Migration, as a widespread and multidimensional phenomenon, has significant effects on the economic status and livelihood stability of households in rural areas. This phenomenon causes extensive changes in the economic structure of the origin and destination regions, which requires a deeper investigation here. Taleshi and Shabnama (2017) in their research examined the causes affecting rural migration to the city from four dimensions: economic, social, cultural and sociological, and natural and agricultural, and concluded that among these dimensions, the



economic dimension plays a major role. On the other hand, migration can provide new opportunities for households and, by creating new jobs in destination regions, help improve the economic status and increase individuals' income. This may lead to economic development and improvement of local infrastructure, which ultimately benefits households and the local community in rural areas. Therefore, considering the research conducted, the issue of preventing migration of people from the rural area of Olad Qobad is important. In the present study, we are looking for ways to prevent migration of households to urban areas. It is worth mentioning that the most important factor in preventing migration can be economic development, in other words, improving economic conditions. Therefore, in the present study, the rate of migration in this rural area is first examined, then the economic conditions of residents in these rural areas, and finally, we will answer this question: Does migration in rural areas have any effects on the economic status and livelihood stability of households?

Necessity and importance of the topic

Migration is a process that occurs in the domestic and even international arena in various forms (village to village, village to city, city to city, city to village and country to country) for various environmental, economic, political and social reasons. Therefore, it is worth mentioning that there is a large difference between the level of urban and rural life (Jomehpour, 2016). Migration, especially internal migration, has become more prevalent in developing countries such as Iran following the intensification of uneven development in recent years and has caused numerous problems and issues such as marginalization, informal settlements, crime, regional inequality, urban density, etc. (Shahbazin and Kalantari-Banadaki, 2011). After the significant entry of oil into the national economy and the unsuccessful experience of land reforms, the Iranian rural society began and experienced a new phase of migration of its population to cities, which continues after the Islamic Revolution of the 1950s and the subsequent outbreak of an imposed war (Amini and Boroumand, 2015). Increased migration from rural areas to cities disrupts the balance of the labor force in rural communities and reduces the power of creativity and innovation in rural communities (Birkman, 2016), which will lead to low yields of agricultural products (Sarafi, 2002). Rural-urban migration indicates the inadequate functioning of the national economy in providing the necessary facilities in the territory (Panahi and Pishrou, 2011). The growth and development of the agricultural sector can pave the way for the development of other economic sectors and play an important role in reducing poverty and unemployment in society (Ekprevir et al., 2017). One of the fundamental issues of this issue is the positive or negative impact of migration on the economic situation of households in rural areas. On the one hand, by attracting labor from rural areas to cities or industrial areas, this combination can lead to a decrease in employment opportunities and an increase in unemployment rates in rural areas. This situation may lead to a decrease in household income



and economic weakness and increase the negative effects on infrastructure and public services in rural areas (Moradi and Savari, 2022).

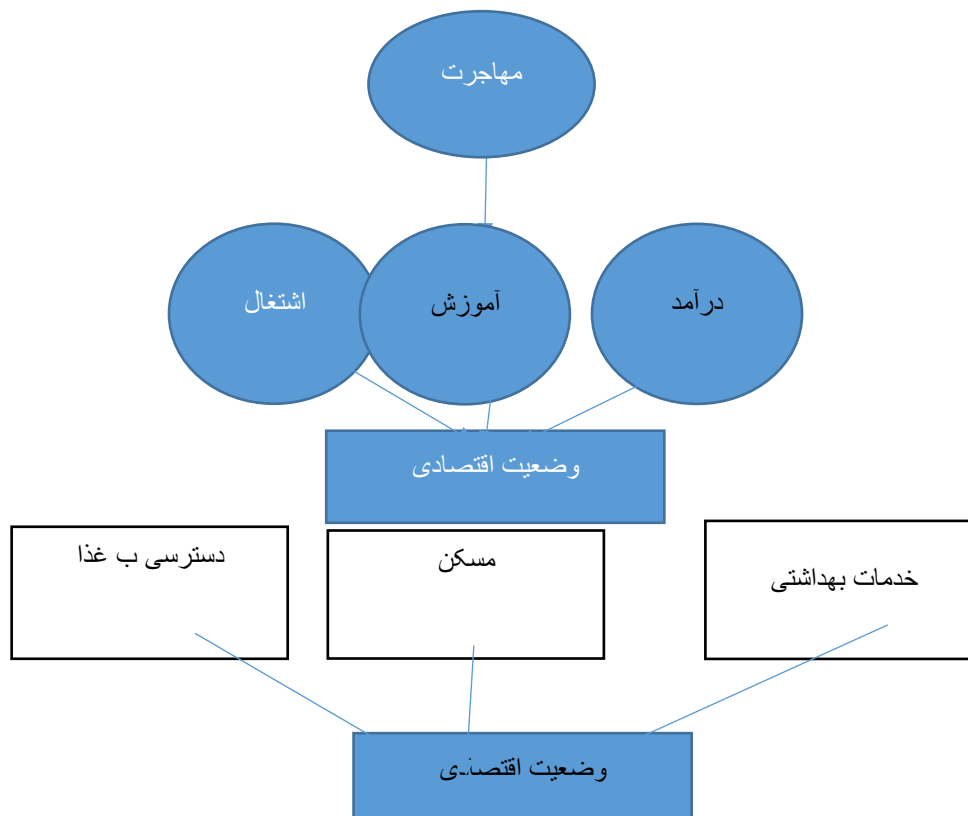
Within the framework of the subject studied in this research, the residents of Olad Qobad village, due to poverty and lack of service and welfare facilities in many of these villages, as well as escaping unemployment, have been moving to local, regional, and regional urban centers around their villages in recent years to find employment and income. What is worth considering in the migration process is the reasons, causes, and motivations for the migration of villagers to urban centers. Because, depending on the natural characteristics, socio-economic conditions, and historical, ethnic, and cultural differences of the villages of origin of migration, villagers move to cities, taking into account the higher goals of life in terms of livelihood and well-being that they have in mind. In other words, the existence of important factors such as the emergence of environmental hazards (drought, flood, earthquake), the removal of biological needs, access to livelihood and welfare facilities and amenities, along with the achievement of new employment and higher income, the removal of poverty and unemployment in economic terms, and the fulfillment of cultural and social needs such as education, raising the level of culture, and the desire to live in specific places are among the most important motivations for rural migration to other places. It is considered the country's settlement centers (Shams al-Dini and Gorjian, 2010).

Rural-urban migration is a phenomenon that, on the one hand, is an economic, social, political, cultural, demographic and psychological issue due to its complex nature, and on the other hand, it indicates the inadequate functioning of the national economy in providing the necessary facilities in the country. It is obvious that the lack of control over widespread migration to the city creates numerous economic, cultural and social problems for the cities of destination of migrants as well as the evacuated villages and will not be beneficial for the development of employment and production in the country (Torkamani and Rahimpour, 2019). Therefore, finding the root causes and factors that cause it in order to reduce migration and consequently reduce the problems caused by it seems necessary. The issue under discussion is the relationship between migration and the level of economic development in rural areas. In many countries, including Iran, paying attention to villages and rural areas is very important for economic development and reducing regional inequality. Some of these areas have There are problems that reduce the quality of life of people and prevent their development. These problems include lack of employment, population decline, reduction of public services and insufficient social capital. One solution to improve economic and social conditions in rural areas is to use migration. Migration to these areas can lead to the transfer of capital, expertise and labor. This labor serves as the basis for the economic development of rural areas and can help create employment, increase production and diversify economic activities in these areas. As we know, economic development is in a way that helps increase production, create



employment and increase the income level of people in the area. However, in rural areas, resources are usually much more limited and economic development in these areas can become a challenge. Therefore, it is very necessary to examine the relationship between migration and the level of economic development in rural areas. If skilled labor and appropriate capital are brought into villages, economic activities will develop there and can help increase production, create employment and improve the living standards of people. This relationship is important not only for rural areas but also for the development of the country in general. In general, by migrating to rural areas and using their capacities, economic development is possible, and the importance and necessity of this measure in reducing inequalities and economic growth of the country is very evident. Therefore, considering the factors mentioned, the issue of examining the relationship between migration and livelihood of the households studied from the Olad Qobad rural district becomes important. In the present study, we seek to discover ways to prevent the migration of households to urban areas. It is worth mentioning that the most important factor in preventing migration can be economic development, in other words, improving economic conditions. Therefore, in the present study, first the rate of migration in this rural district is examined, then the economic conditions of the residents who are in these rural areas, and finally, we examine the relationship between migration and economic conditions.

Conceptual model





The model shows that migration directly affects employment, income, and education, which can change the economic status of households. As a result, economic status affects access to food, housing, and health services, all of which are key factors in the sustainability of household livelihoods.

Population decline can lead to a reduction in the local labor force and a decrease in employment in the region. Migration may also lead to a decrease or increase in the income of the remaining households. A decrease or increase in employment can directly affect household income. Household income determines their access to livelihood resources and services. Access to education and the level of education can affect the ability of households to find better job opportunities and higher incomes. Household economic status determines their access to food, housing, and health services. The final outcome of changes in the above variables is the ability of households to maintain and improve their quality of life. This conceptual model shows that migration can have multiple effects on the economic status and livelihood stability of households, and its effects are transmitted through intermediate variables such as employment, income, and education.

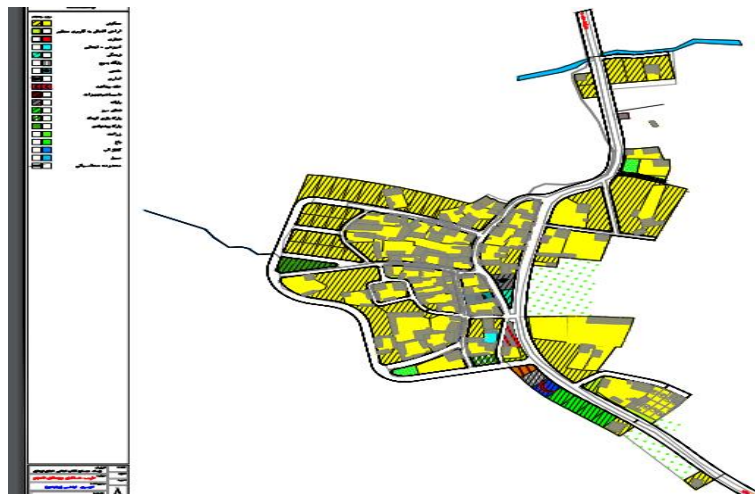
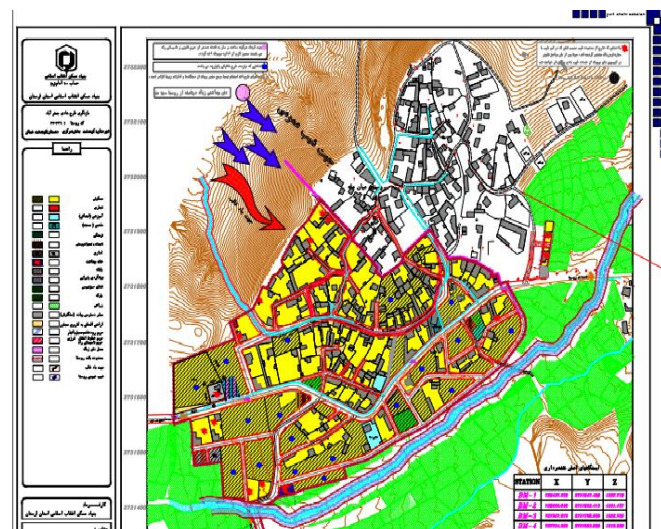
Research Method

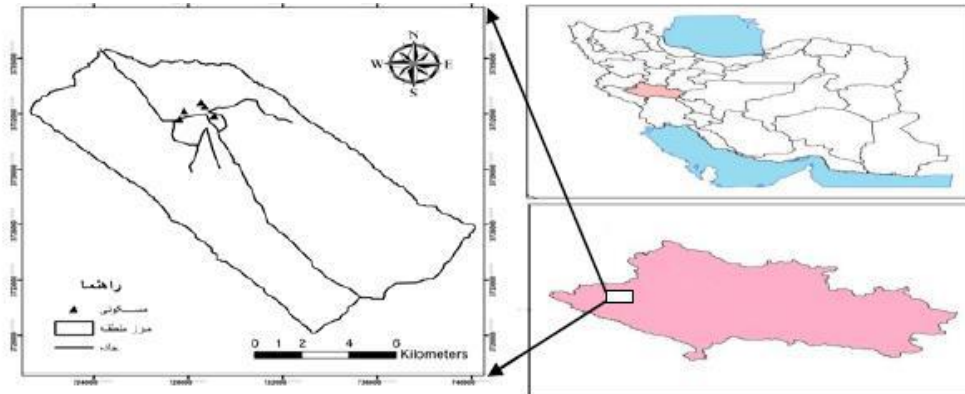
The present research approach is quantitative and in terms of purpose, it is a developmental-applied research, and in terms of data collection, it is a field and library category, and in terms of data collection method and data collection method, it is a descriptive-survey research. Given that the present research seeks to investigate the relationship between migration and the level of economic development in rural areas, the case study is Olad Qobad village, Kohdasht county, Lorestan, it is classified as applied research. The statistical population in this study is 1716 people, so that the questionnaire was distributed to the statistical population and the number of responses received is the sample size. The sampling method is random. Given the size of the statistical population, the Cochran formula was used to determine the sample size. In this study, the sampling method is relative stratified random sampling and 210 people were selected as the sample.

Data collection technique This study used field surveys, information from relevant organizations, and data collection through a researcher-made questionnaire. The study population of households in Olad Qobad rural district was 1716 people according to the 2016 census, and 210 people were selected. First, a questionnaire was designed and compiled in accordance with the research objectives. The questionnaire included open and closed questions that examined various factors related to migration and the economic status and livelihood stability of households. The questionnaires were first piloted on 30 people from the study population to ensure the accuracy and validity of the instrument. After analyzing the pilot data, the necessary changes were made to the questionnaire. The final questionnaires were



distributed among 210 members of the study population. This work was done in cooperation with the village heads and local councils. The information obtained from the questionnaires was collected and recorded manually. To complete the questionnaire data, in-depth interviews were conducted with a number of household members to examine their personal opinions and experiences about migration and its effects on the economic and livelihood status of households. The reliability of the study was also determined by using Cronbach's alpha coefficient. According to the results obtained, Cronbach's alpha for all variables was 0.78, so the questionnaire has appropriate reliability and validity, and the present questionnaire is a good tool for measuring the research variables.





شکل ۱: موقعیت منطقه مورد مطالعه در ایران و استان لرستان

Based on field observations and statistics from 2011 to 2016, the population of this rural district in Kohdasht County increased in 2006 to 2016, but the population is decreasing in 2016. The background of these findings is that they indicate migration in this region, and also, considering the questions raised, it shows that most of this migration has taken place in this rural district for economic reasons.

Population	Village	Year
476	Jafarabad	1390
431	Tekyeh	
277	Mianmaleh	
363	Namjoo	
302	Sarkooreh	
470	Jafarabadi	1395
384	Tekieh	
298	Mianmaleh	
304	Namjoo	
260	Sarkooreh	

The level of access to facilities and services in the rural district of Olad Qabad, which consists of 5 villages, is average. This rural district has basic infrastructure such as telephone, internet access, gas, water and plumbing, electricity, and the roads connecting this rural district to the city are asphalt. There are no other trusts that can be mentioned. These 5 villages are known as



a district in the county because they are all from the same clan and tribe. The government also considers the creation and construction of a district so that all 5 villages benefit from a service location. It should be noted that the construction of this school and clinic or any other place in the villages depends on the land in which it is donated. Therefore, the location of its construction is determined by the village in which the land is donated, because in each of the places that are built, the government has only borne the cost of construction. This is why in the village of Namjoo, whose population is over 363 people, a land was donated by the residents to build a school. This school is used by all 5 villages, and all classes from elementary to high school are held in this school. Similarly, in the village of Tekye, whose population is 384, a land was donated and a clinic was built in this village. The conditions for the clinic are the same as the school, and all households in the 5 villages are They refer to the Tekye clinic, meaning that this school and clinic are used on a regular basis. All villages are under the control of a village council and a village headman, and the main occupation and work in these rural areas is animal husbandry and agriculture, which uses animal and agricultural products to help with their livelihood and expenses. The advantages of this rural area are land and places suitable for agriculture and animal husbandry, and there are also places for tourism in the villages that are known, but unfortunately, many tourists do not travel there despite being known. Another advantage of this rural area is the presence of coal mines, so that there are coal mines in many mountains in this rural area and sometimes they are extracted. According to field observations, many people in these villages are not satisfied with migrating due to the advantages that exist in the village, but the bad economic conditions have forced them to migrate to improve their economic situation and access to more facilities in urban areas.

Findings

Descriptive Statistics of Demographic Characteristics

The data in the table and graph below indicate the status of the study sample in terms of demographic characteristics of the population.

Table 1. Frequency distribution of demographic characteristics

Percentage of frequency	Abundance	Gender
57	120	Man
42	90	Woman
100	210	total
Percentage	Abundance	Age



10	23	20-30
11	25	31-40
36	77	41-50
40	85	Over 50
100	210	total
Percentage	Abundance	Marriage
46	98	Single
53	112	Married
Percentage	Abundance	Education
40	85	Diploma and sub-diploma
14	30	Postgraduate diploma
30	63	Bachelor's degree
10	22	Master's degree
4	10	PhD
100/0	210	total
Percentage	Abundance	Duration of stay
40	85	years 5 -1
11	24	to 10 years 6
12	26	to 15 years 11
35.7	75	Over 15 years old
100/0	210	total
Percentage	Abundance	Number of family members
14	31	1-2 نفر



45.2	95	3-4 نفر
40	84	بالای 4
100/0	210	total

Descriptive Statistics of Research Variables

As explained, in descriptive methods, an attempt is made to describe the research data by presenting a table and using descriptive statistics tools such as; central and dispersion indices, in order to help clarify the subject. The following table contains descriptive statistics for all variables used in the research. In the first section, the most important central and dispersion indices of the research variables are presented. Among the central indices, the mean and the standard deviation of the variable are used as dispersion indices. The figures in this table were calculated using SPSS software.

Table 2. Description of Research Variables

Standard Deviation	Average	Maximum	Minimum	Number	Variable
0.76576	3.0839	5.00	1.00	210	Economic situation
0.76163	3.0345	5.00	1.00	210	Immigration

Based on the results of the table, it is observed that the economic situation has the highest mean and standard deviation. The mean indicates the average value of a variable and the standard deviation indicates how much the data is scattered from the mean of that variable.

On the other hand, the mean of all numerical variables is higher than 3. This indicates that the mean of these variables is higher than 3 and therefore the mean value of these variables is attractive to the respondents. This may indicate that values above 3 for these variables are desirable from the respondents' point of view and indicate that these variables are considered and important.

Therefore, based on the results of the table, the economic situation is characterized by the highest mean and standard deviation and other numerical variables are also characterized by a mean higher than 3 indicating their desirability from the respondents' point of view.



Data Normality Test in SPSS

Table 3. Data Normality Test

variable	kurtosis	Skewness
Economic situation	-0.772	0.398
Immigration	-0.735	0.448

The observed skewness value for all dimensions is in the range (2, -2). This means that the data distribution in the dimensions under study is normal and its width is moderate compared to the normal distribution. This shows that the data in different dimensions are almost evenly distributed and there is no large deviation in their distribution. Also, the kurtosis value for these dimensions is also in the range (2, -2). This shows that the data distribution in these dimensions is close to normality in terms of kurtosis and has a small deviation from the normal distribution. Therefore, based on the values of skewness and kurtosis, it can be concluded that in the dimensions under study, the data distribution is normal and their distribution is symmetrical. Also, their kurtosis also shows the least deviation from the normal distribution.

Inferential Data Analysis

To examine the research hypotheses, the correlation test is first used.

Table 4. Pearson correlation test between immigration and economic status

**0.928	1	Pearson correlation coefficient	Immigration
0.00		Meaningfulness	
1	**0.928	Pearson correlation coefficient	Economic situation
	0.00	Meaningfulness	

Pearson correlation test showed that there is a correlation between immigration and economic status (P=0.00 and 0.92 (r= . The direction of the relationship between the two variables is



positive. The strength of the correlation obtained is moderate. At the 99% confidence level, this hypothesis is confirmed.

The results of the Pearson correlation test show that there is a correlation between immigration and economic status. The P value, which is equal to 0.00, indicates that the probability of this correlation occurring by chance is almost zero, in other words, the probability of ignoring the correlation is zero. Therefore, we can say that the existence of a statistical correlation between immigration and economic status is probably real and significant.

The r value or Pearson correlation coefficient is equal to 0.92. To interpret this value, we can use a scale that is generally used to interpret the strength of the correlation. According to this scale, a correlation coefficient of 0.92 is considered an acceptable medium correlation. This indicates that immigration and economic status are directly and moderately related to each other. As the value of one variable increases, the value of the other variable also increases on average.

At the 99% confidence level, this hypothesis is confirmed. This means that, considering the 99% confidence level, we can say with high confidence that there is a correlation between immigration and economic status and that the result is not due to chance.

So, in summary, the results show that immigration and economic status are positively correlated with each other and this correlation is in the moderate range. Furthermore, confirming this hypothesis with a 99% confidence level shows that this correlation is real and reliable.

To further examine the relationship between immigration and the economic status and livelihood sustainability of rural households at the rural area level, a regression test will also be used:

To examine this question, the regression method is used, the results of which are presented in the table below.

Table 5. Pearson correlation test Main question

F	R2	R	p	t	Beta	Predictor variables	Criterion variable
23.67	0.860	0.928	0.00	3.133	0.190	Economic situation	Immigration
				48.432	0.923		



References

1. Cai, Y., and Zhu, L. (2015). Livelihoods and the peasants life satisfaction: A case study at shuangliu country and chong zhou town in chendu city. *J. Huazhong Agric. Univ. Soc. Sci. Ed.* (1), 30–38. doi:10.13300/j.cnki.hnwkxb.2015.01.005
2. Callaghan, E. G., and Colton, J. (2008). Building sustainable & resilient communities: A balancing of community capital. *Environ. Dev. Sustain* 10 (6), 931–942. doi:10.1007/s10668-007-9093-4
3. Chambers, R., and Conway, G. (1992). Sustainable rural livelihoods: Practical concepts for the 21st century. Brighton, UK: Institute of Development Studies.
4. Chen, J., and Li, F. (2019). On the cultural of ecological immigrants from the perspective of memory theory: A case study of fengle community in rongjiang county, guizhou province. *Guangxi Ethn. Stud.* (5), 65–72.
5. Dai, H., and Zhao, W. (2020). Hometown attachment, Urban adaptation and life satisfaction of rural Migrants. *J. Huazhong Agric. Univ. Soc. Sci. Ed.* (2), 109–117. doi:10.13300/j.cnki.hnwkxb.2020.02.013
6. Dang, Y., Zhang, W., Chen, L., and Zhan, D. (2021). The influence of living environment satisfaction on migrants' settlement intention. *Northwest Popul. J.* 42 (5), 105–114. doi:10.15884/j.cnki.issn.1007-0672.2021.05.009
7. Dirzyte, A., Patapas, A., and Perminas, A. (2022). Associations between leisure preferences, mindfulness, psychological capital, and life satisfaction. *Int. J. Environ. Res. Public Health* 19 (7), 4121. doi:10.3390/ijerph19074121
8. Dong, H., Ding, Y., Ding, W., and Hou, X. (2020). Subjective life satisfaction of herdsmen from the perspective of livelihood capital: A case of inner Mongolia. *J. Arid Land Resour. Environ.* 34 (3), 14–19. doi:10.13448/j.cnki.jalre.2020.60