



Wavelet-Fuzzy Model for Efficient Enhancement and Classification of Remote Sensing Images

**B.Naga Rajesh¹, S. Noorullah², K. Prasad Babu³, S. Abdul Malik⁴,
Dr.N.Mageswari⁵**

^{1,3}Assistant Professor, ^{2,4}Associate Professor, ⁵Professor

^{1, 2,3,4,5} Department of Electronic Communication Engineering

^{1,2,3,4,5} Ashoka Women's Engineering College (Autonomous), Kurnool, AP,India

Email: ¹ nagarajesh@ashokacollege.in, ² noorullah@ashokacollege.in,

³ prasadbabu@ashokacollege.in, ⁴ abdulmalik@ashokacollege.in,

⁵ mageswari@ashokacollege.in

Abstract:-

According to the interpolation that DWT can achieve, the resolution of the satellite image can be improved. The input image is separated into many subbands and the speckle noise is eliminated using DWT. After then, IDWT can be used to blend the inputs low-level and high-level and high level images to create a better image. Here, an intermediary step for high-level approximation is suggested. The new fuzzy clustering technique and image fusion strategy are used to vary the detection methods for SAR images. Wavelet fusion directions are taken into consideration in order to combine the wavelet coefficients and return an improved image. To distinguish between the changed and unaffected areas in the combined difference image, a fuzzy C means algorithm is proposed.

Keywords: DWT, interpolation, satellite, resolution, enhancement, fuzzy C-means algorithm, SAR.

1. Introduction

Image resolution is always a major concern in several applications, specifically in satellite image resolution enhancement. Hence, a new image enhancement technique which is highly dependent on the combination of the high-level images acquired by DWT and an image at the input. The proposed satellite image enhancement method employs DWT to deteriorate the image at the input into several small images. Subsequently the low-level image at the input and high – level images are combined to develop a better image employing IDWT. A midterm stage for approximating high frequency sub images is proposed here in resulting a sharper image.

This method effects in four subimages named as low low (LL), low-high (LH), high-low (HL), and high-high (HH). The whole spectrum of the original image comprises of the above frequency parts.



Received: 16-09-2025

Revised: 05-10-2025

Accepted: 02-11-2025

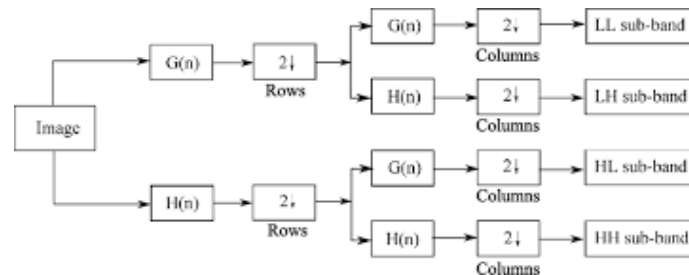


Fig. 1 Schematic representation of DWT filter

Resolution of an image can be magnified through wavelets which is a new technique and proposed several new algorithms for the last decade. Here, we propose a satellite image resolution enhancement technique using combined DWT and the low-resolution information at the input. IDWT helps to combine all the above images to develop the resultant image. Finally, to develop a resolution-enhanced image, an arbitrary approach is used for SAR images which are highly dependent on clustering algorithms.

The image interpolation method is employed to develop a sharper image by using reciprocal data via log-ratio image and mean-ratio image. In order to retrieve the background information and enhanced image, Wavelet combination directives are widely used. For identifying altered and unaltered regions in the combined image, a reconstructed fuzzy C-means clustering is proposed.

The standard of the enhanced image gives the full performance of SAR-image that identifies the change in the detection. In order, we here propose two major issues to address an arbitrary distribution-free SAR-image that identifies the change in the detection approach in this paper

2. Existing System

Satellite image resolution enhancement has been using several methods until now. Here, we have used two techniques in this paper. They are as follows:

A. CS Based Image Resolution Enhancement

CS based enhancement technique comprises of two major steps which are as discussed below:

1) Applying WZP, an early estimation to the arbitrary resolution -enhanced image is generated.

2) The following tasks are operated by adopting cycle-spinning methodology:

An estimated enhanced image decomposes into many of low level images by removing the high level images.



Received: 16-09-2025

Revised: 05-10-2025

Accepted: 02-11-2025

Applying WZP to low level images effects in N high level images.

The above midway high level images are reconstructed to effect the end image.

B. CWT-Based Image Resolution Enhancement

The main purpose of DTCWT is to divide into several small images from an image taken at the input. Also, a low-resolution image at the input can decompose into several sub images by using this method. Moreover, all the images are united employing inverse DT-CWT to produce a new enhanced image. Edges in six different directions of high-frequency sub images, is realized by using directional selectivity. For change detection some of the existing methods were used such as K-means, Otsu and FCM. The PCC analysis says that the variation in the detection leads to disastrous by Otsu and K-means. In FCM maps, which is sensitive to noise, decides the need of integrating the information about geographical context. The yielded PCC value is less when compared with proposed method. The computational time required to complete the process is more when compared with our proposed method.

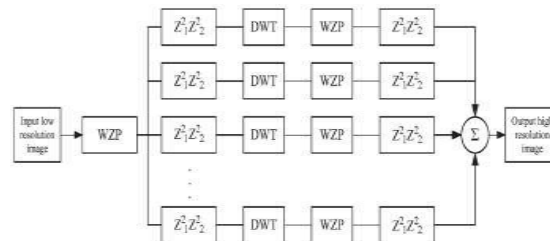


Fig. 2 Schematic representation of the WZP- and CS-based Image super resolution

3. Proposed System

Here, we propose an image resolution-enhancement method which combines DWT images and low-level images. Then, IDWT is applied to unite all the images for a better enhanced image at the end.

The standard of the difference image and the exact classification technique gives the full performance of SAR-image which identifies the variation. So an arbitrary SAR-image which identifies the variation approach to mark the following two things in this paper.

The two issues are distinctive which are given below:

Developing subtracted images by combining a mean-ratio image and a log-ratio image.

Improving the fuzzy c-means clustering algorithm which is varied in the subtracted image.

The Nasa's Terra first image taken at the Sendai region of Japan is chosen as input image. In this paper, two images taken at same scene at different times is considered. Hence a photo on February 26, 2011(before Tsunami) and March 12, 2011, at 10:30 a.m. (After Tsunami) were



Received: 16-09-2025

Revised: 05-10-2025

Accepted: 02-11-2025

taken.

The later image is slightly dark and differentiating the changes in coastal area and take the calibration. However, the measuring instrument for flood shows how far flood has extended inland.

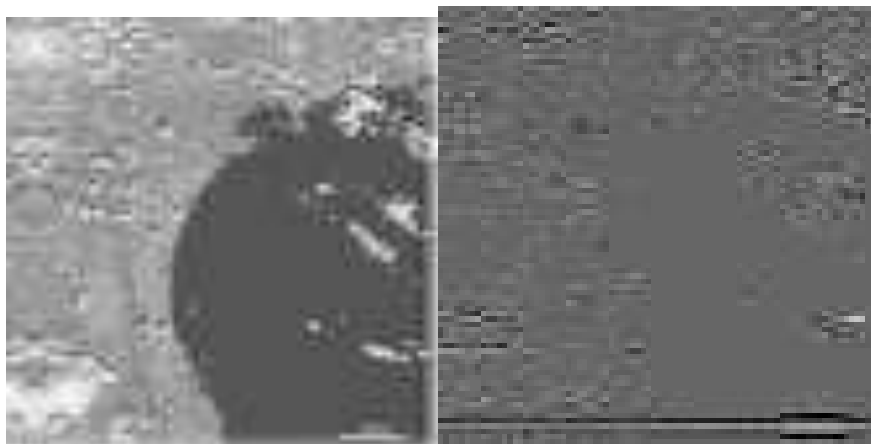
If we take care of the edges, the standard of enhanced image will be quite clearer. Hence, DWT algorithm is preferred to protect high-level pixels of the image.



Fig. 3 Input of low resolution image taken at sendai region of japan after Tsunami

All the four images are passed through the combination technique. The LL subband, with no division is used for the proposed enhancement process as an input. Particularly, low level images are the low frequency parts of the initial image and high level images contain high frequency parts.

LL LH





Received: 16-09-2025

Revised: 05-10-2025

Accepted: 02-11-2025

HL HH

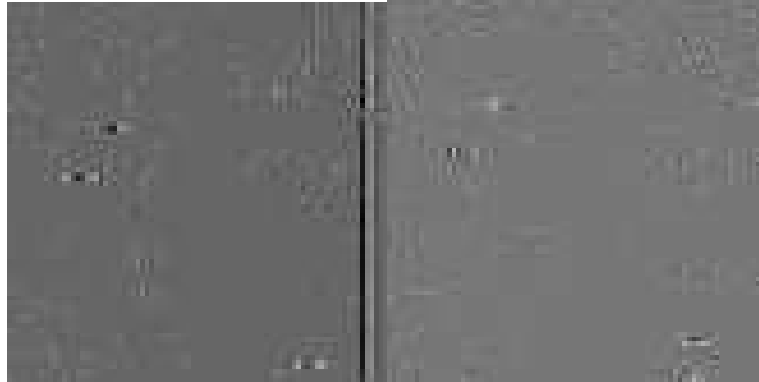


Fig .4 LL, LH, HL, and HH subbands of a satellite image acquired by using DWT

Hence, apart from operating with low-level images, we are employing the image at the input through the wavelet combining process, which holds low-level information. Therefore, LL subband is combined with factor, $\alpha/2$ to obtain a clearer image.

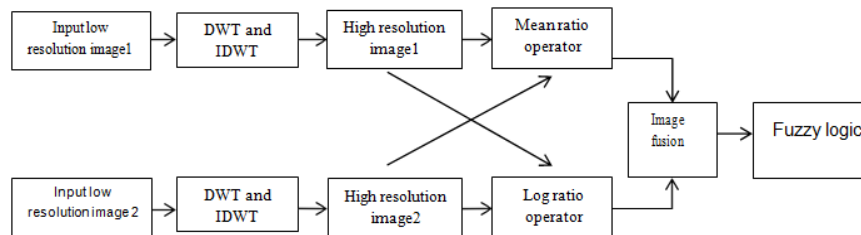
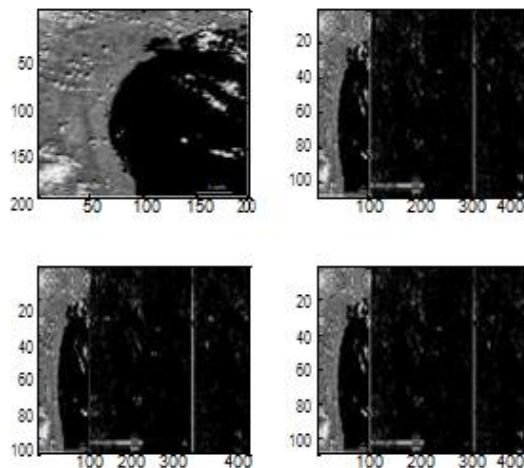


Fig.5 Proposed block diagram



The Speckle noise have a multiplicative tendency which transforms to a noise component in



Received: 16-09-2025

Revised: 05-10-2025

Accepted: 02-11-2025

log-ratio component. Moreover, the corresponding ratio image results in enhancing low-level pixels which was proposed in RMD. RMD acts as a tough barrier for speckle noise. It approximates the variations of the image through a mean value.

The above two techniques instead of resulting in variation of the detected image in SAR also have many disadvantages like increasing the intensity of low-level pixels and decreasing the intensity of high-level pixels. Hence, the altered and unaltered images from the two techniques should have been more effective.

Fuzzy logic is a probabilistic logic that deals with reasoning that is estimated. on the other side, in a traditional way, binary set will have either 0 or 1 whereas fuzzy logic varies in between 0 and 1.

Fuzzy c-means clustering algorithm:

- Allocate values to all $W_{i,j}$.
- Redo the same.
- Calculate the midterm of each cluster.
- Update the fuzzy partition.
- Until the midterms don't change $W_{i,j}$

Therefore, the varied regions produced by the log-ratio image will not reciprocate the original changed regions to the extreme trends since brighter pixels are in the decrement mode. Concern to RMD, it will deal with low level pixels of temporal images. But the fundamental objective says that, changed areas have high intensity values whereas unchanged regions have low intensity values.

4. Conclusion

The quantitative result of PSNR and RMSE shows that our proposed method is robust. The quality of image produced by other interpolation technique is not well suits for satellite images. It produces higher PSNR value. The computational time required to complete the process is less when comparing with other existing methods.

The variation in the detection map generated by this technique is robust to noise. The PCC value produced by this method is high when comparing with existing methods. It yields to identify a deal between pixel protections and reducing the noise level. This method takes part in calibrating the local information compared to FLICM



Received: 16-09-2025

Revised: 05-10-2025

Accepted: 02-11-2025

References

1. M. Ahmed, S. Yamany, N. Mohamed, A. Farag, and T.Moriarty,(Mar. 2002) “A modified fuzzy C-means algorithm for bias field estimation and segmentation of MRI data,” IEEE Trans. Med. Imag., vol.21.
2. W. Cai, S. Chen, and D. Zhang, (Mar. 2007) “Fast and robust fuzzy C-means clustering algorithms incorporating local information for image segmentation,” Pattern Recognit., vol.40.
3. Atkins, C. A. Bouman, and J. P. Allebach,(Oct. 7– 10, 2001) “Optimal image scaling using pixel classification,” in Proc. Int. Conf. Image Process., vol.3.
4. Carey, D. B. Chuang, and S. S. Hemami, (Sep. 1999) “Regularity-preserving image interpolation,” IEEE Trans. Image Process., vol. 8.
5. Demirel, G. Anbarjafari, and S. Izadpanahi, (Aug. 2009), “Improved motion based localized super resolution technique using discrete wavelet transform for low resolution video enhancement,” in Proc. 17th Eur. Signal Process. Conf., Glasgow, Scotland.
6. J. Inglada and G. Mercier, (May 2007), “ A new statistical similarity measure for change detection in multitemporal SAR images and its extension to multiscale change analysis,” IEEE. Trans. Geosci. Remote Sens., vol.45.